

Replacing the Lexan Label

The lexan label on the front of the 1730 series transmitters contains electrical connections and contacts for the keypad and LED indicators. These electrical connections may deteriorate over time or become damaged by improper handling.

A faulty lexan may present in several ways; the most common being that one or more buttons on the keypad stop working. Alternatively, one or more button contacts may internally short leading to the transmitter behaving as though the button is pressed even when it is not. This latter case may present in unusual behaviours, and in some specific cases power cycling of the transmitter.

With the correct tools, replacement of the lexan label should take less than 10 minutes, in which time the transmitter will need to be switched off. It is recommended that you read this document before proceeding, as there are a few tips that could save considerable time and effort.

Diagnosing a faulty lexan label

The process of determining whether the fault lies with the lexan label itself, and not with other circuitry is outside of the scope of this document. Please refer to the 1730 Series Diagnostics Mode Reference Manual, specifically the sub-section 'Testing the Keypad'.

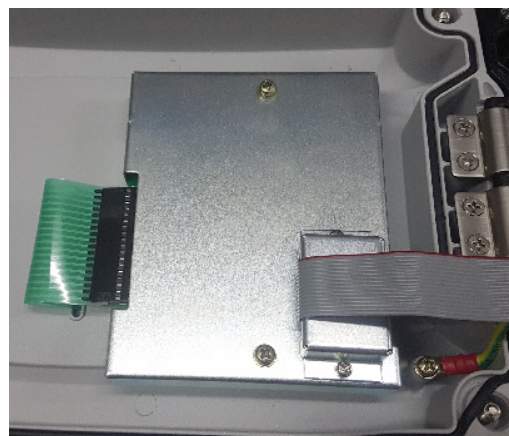
Required Tools

- Flat head screwdriver, size 6, 8, or 10
- Gum & Label Remover – see recommendations on the next page
- Windex
- Philips head screwdriver, size #1

Removing the old Label

Before removing the label, the display PCB must be disconnected and removed.

1. Switch off power to the transmitter
2. Using the flat head screwdriver, unscrew the four screws on the front of the case lid. The screws are captive spring-loaded and will pop up when fully unscrewed.
3. Open the case and locate the display PCB on the rear of the case lid.
4. Disconnect both ribbon cables and unscrew the two screws holding the metal shield.
5. Carefully slide the shield back along the smaller ribbon cable to expose the circuit board beneath. Unscrew the two screws to remove the display circuit board.



With the display board removed the lexan can now be removed from the case lid. Using the flat head screwdriver carefully, so as not to damage the case lid, level up one of the corners of the lexan, then using your hands, rip away from the case.

Gum & Label Remover

The lexan label will leave behind adhesive gum on the case lid. This must be cleaned away to allow the new lexan to sit flat and adhere properly. There are several products available that make gum removal simple – two that we have tested and can recommend are;

- Chemtools Gum & Label Remover
<http://www.chemtools.com.au/product/aerosols/electronics-electrical/gum-and-label-remover/>
- Electrolube LRM Label Remover
http://www.electrolube.com.au/products/maintenance-service-aids/lrm/general_maintenance/

Following the directions on the label remover, and being careful not to get any liquids or solvents on the electronics, remove any gum residue from the case lid and clean the surface ready for the replacement lexan label.

Installing the new Label

This key step to installing the new lexan label is getting the positioning and alignment right. The trick to this is to use Windex to allow the lexan to be positioned before it adheres to the case lid.

1. Remove the backing paper from the lexan label to expose the sticky adhesive
2. Liberally spray the adhesive with Windex. Enough to dampen all of the adhesive, but not to drip
3. Feed the ribbon cable through the slot in the case and position the lexan.
The application of windex should allow the adhesive to slide against the case lid for a few seconds before it begins to grab. Position the label quickly, and avoid bending or tearing the lexan as this may cause damage to the internal electrical connections.
4. Once positioned, press down firmly and hold for 20 seconds

Before reinstalling the display board and shield, clean up any residue around the lexan, paying special attention to the rear side of the lexan around the clear LCD display window.
--

5. Re-install the display board and shield following the removal procedure on the previous page and re-connect both ribbon cables.

Once you have tested the new lexan and are happy that all problems are resolved, tighten the four case lid screws.